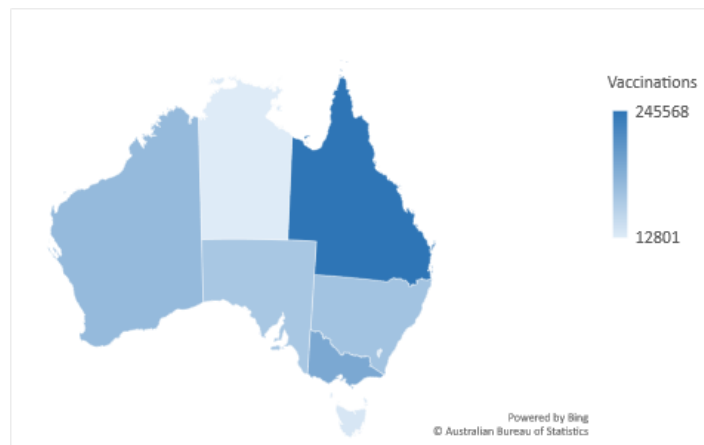
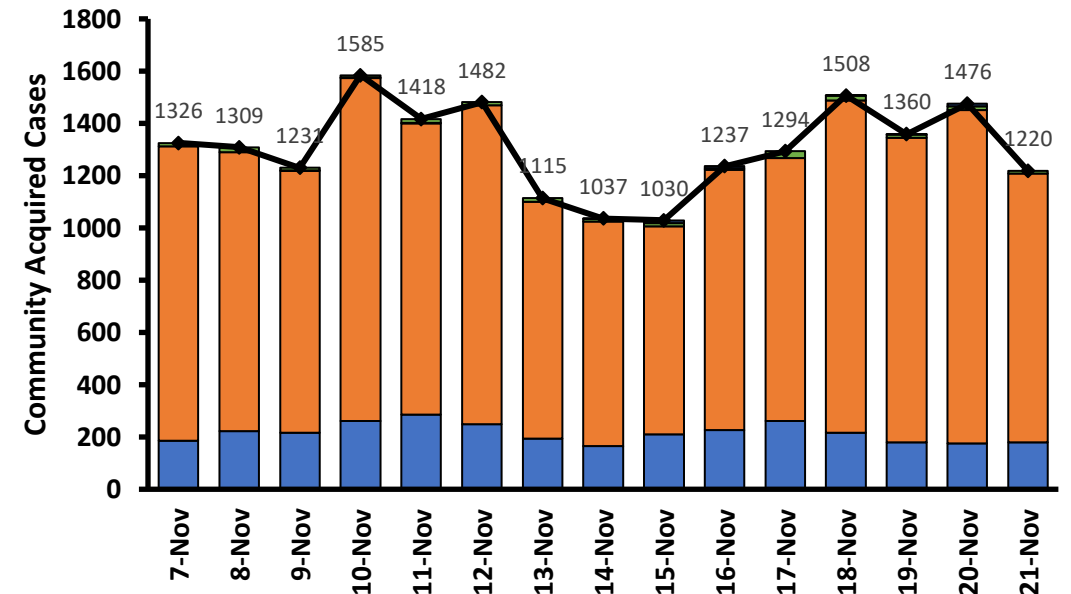
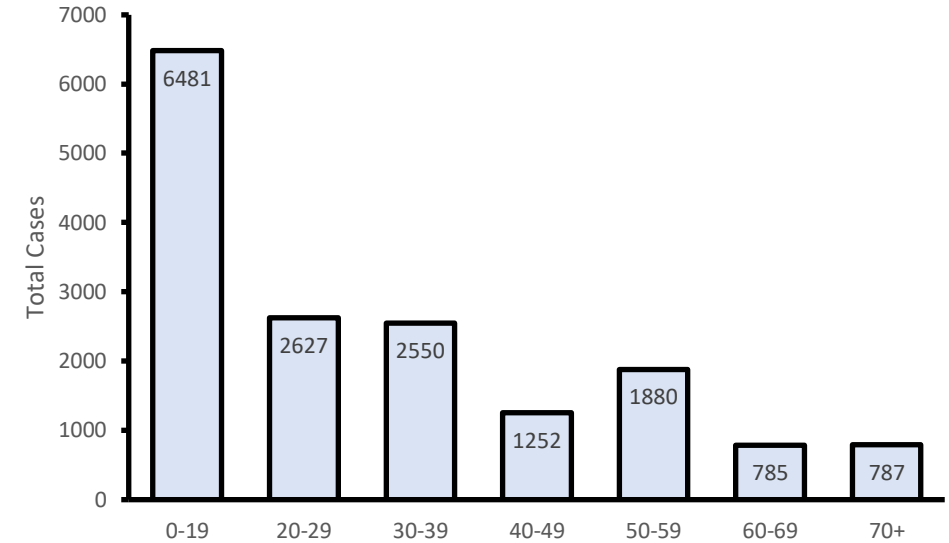


Overview for the past two weeks



OzSAGE

- There have been over **19,628** reported community cases
- **55.7%** of all cases are below 30 years of age
- **91.5%** of those over 16 are fully vaccinated
 - **62%** of those between the ages of 12 and 15 are fully vaccinated



School and Aged Care Outbreaks



OzSAGE

- **33** active outbreaks in **Aged Care Facilities** across Australia **220** new resident cases
 - ❖ **76** new staff cases
 - ❖ **29** new deaths
- **School Outbreaks:**
 - **39.6%** or **6481** cases have been in children (18 and below) across Australia in the past two weeks
 - More than **575** school closures have been reported in NSW
 - Currently, there are **15** schools closed across NSW
 - Twice a week antigen testing of students in schools and reduce schools quarantining was established in VIC
 - Currently, there are **68 early childhood services** and **10 school closures** across VIC

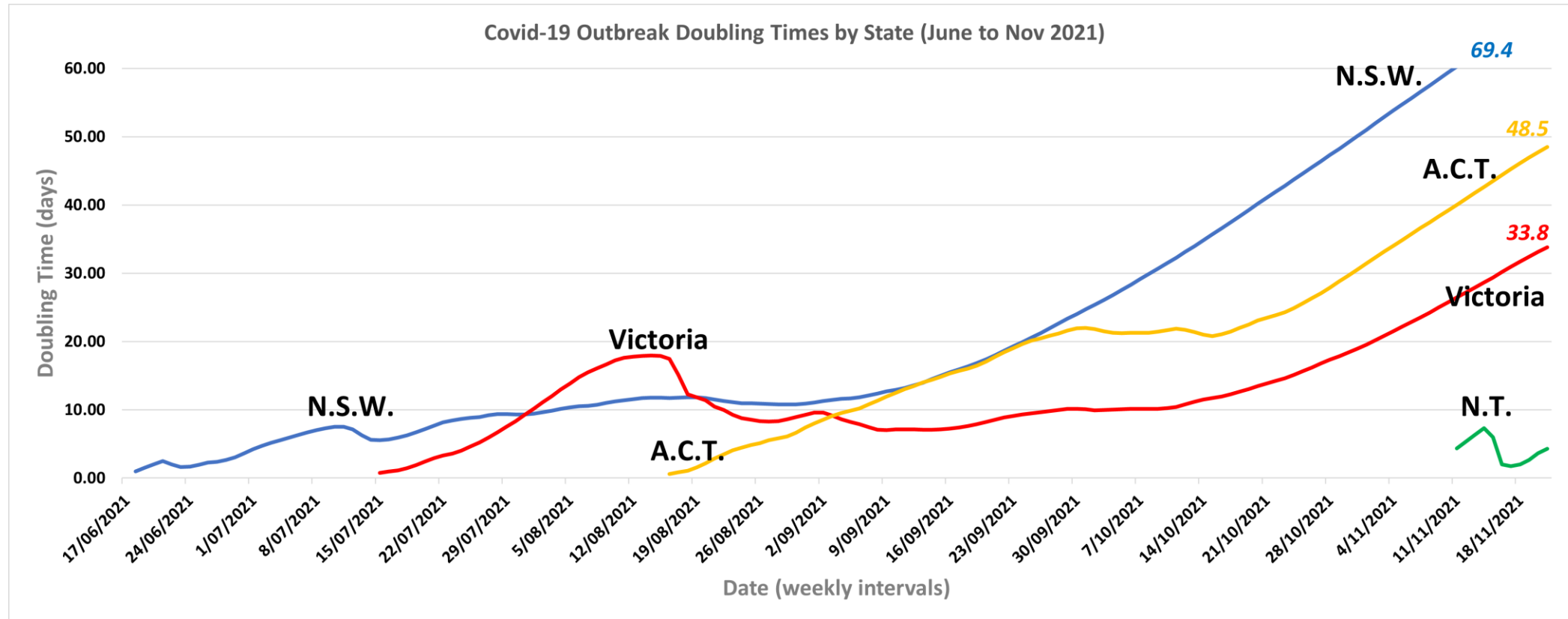


EPIWATCH

Doubling Time



- Trends of slowing growth continue (2 months for NSW and 1 month for ACT and Victoria) with no evidence of a turnaround



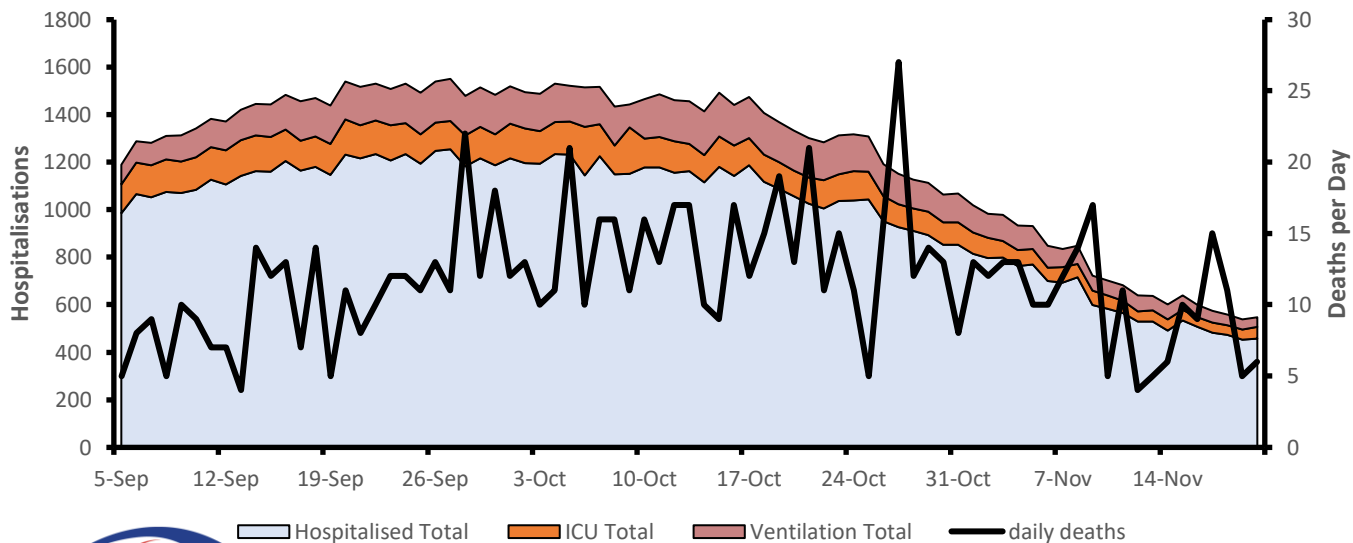
Hospitalisations and Deaths



➤ 134 deaths have been reported this past 2 weeks

- death occurred in people in their 30s

	hospitalised	ICU	Ventilation
NSW	192	32	15
VIC	317	56	25
ACT	5	2	1
QLD	4	0	0
SA	0	0	0
TAS	0	0	0
NT	29	0	0
Total	547	90	41



■ Hospitalised Total
 ■ ICU Total
 ■ Ventilation Total
 — daily deaths

